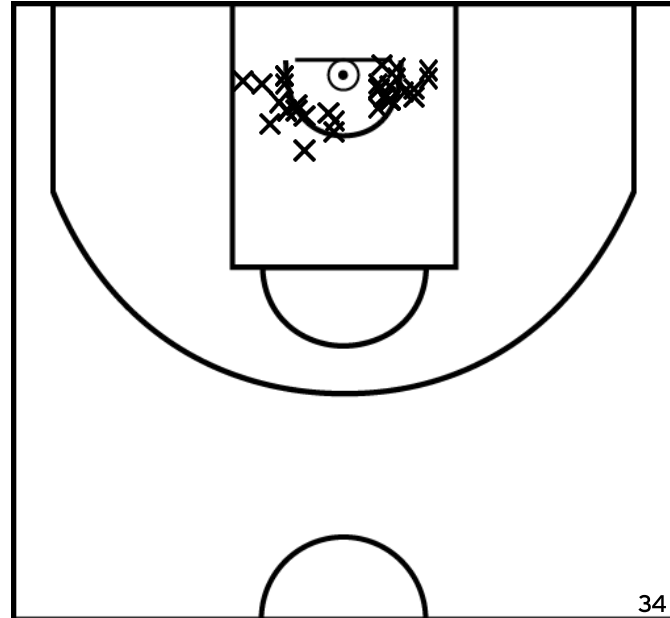


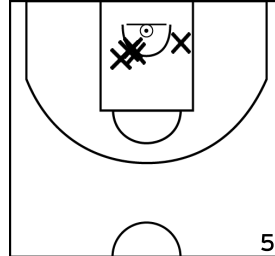
Rencontre: 89 Date: 26/11/22 Heure: 13:30

Arbitre: CONAN M VUILLAMY A

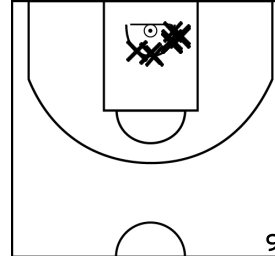
ÉQUIPE ETOILE SAINT LAURENT BREST - 2 (A)



PÉRIODE 1



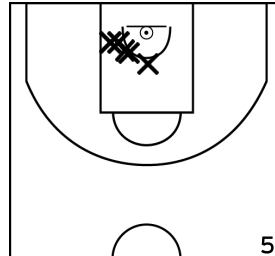
PÉRIODE 3



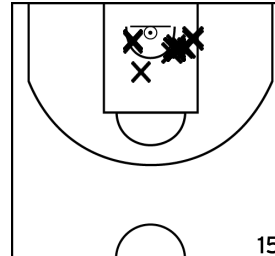
PROLONGATIONS



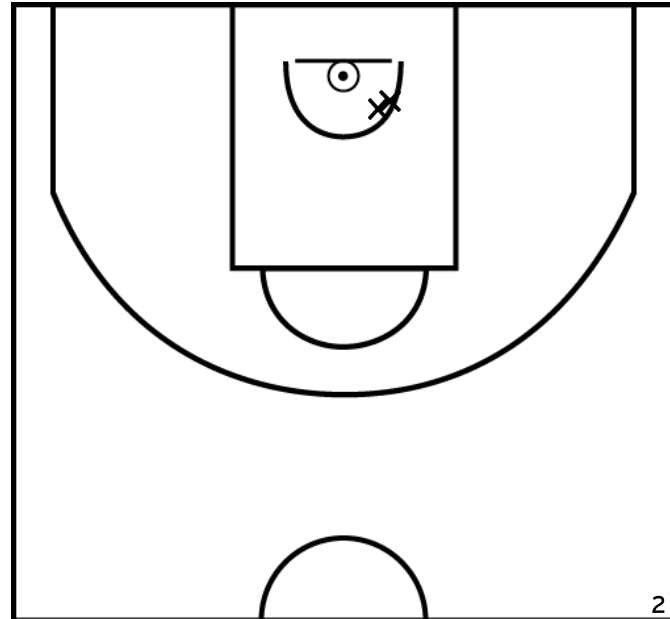
PÉRIODE 2



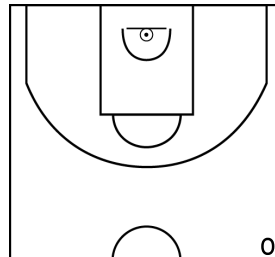
PÉRIODE 4



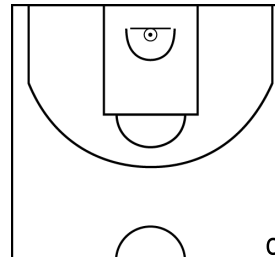
AUTOMALO S. - ETOILE SAINT LAURENT BREST - 2 (A)



PÉRIODE 1



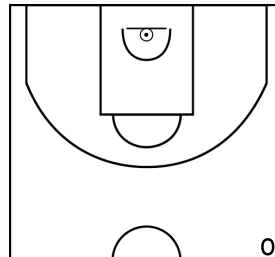
PÉRIODE 3



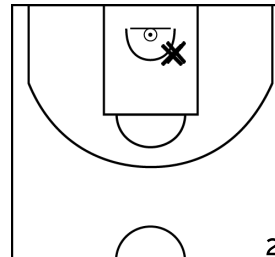
PROLONGATIONS



PÉRIODE 2



PÉRIODE 4



Rencontre: 89 Date: 26/11/22 Heure: 13:30

Arbitre: CONAN M VUILLAMY A

IDIR R. - ETOILE SAINT LAURENT BREST - 2 (A)



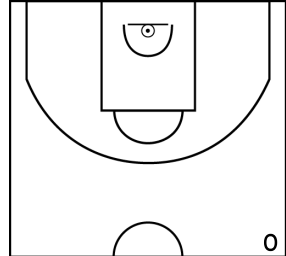
PÉRIODE 1



PÉRIODE 3



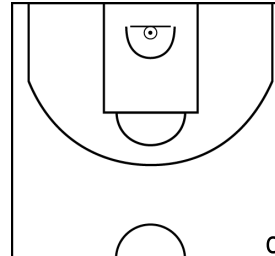
PROLONGATIONS



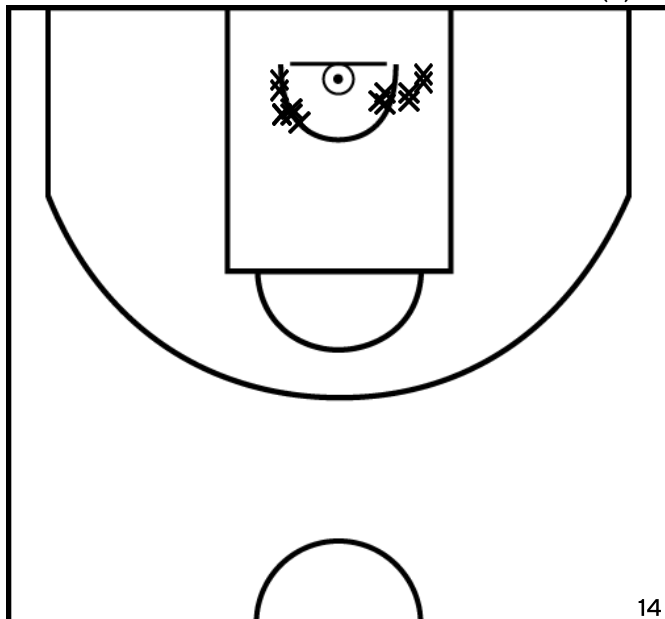
PÉRIODE 2



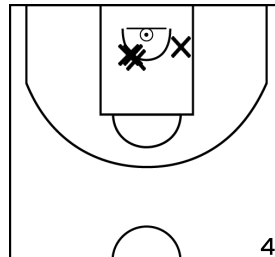
PÉRIODE 4



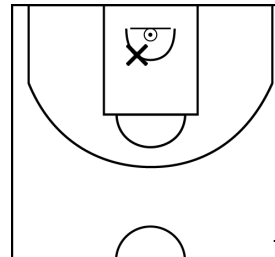
CROGUENNOC A. - ETOILE SAINT LAURENT BREST - 2 (A)



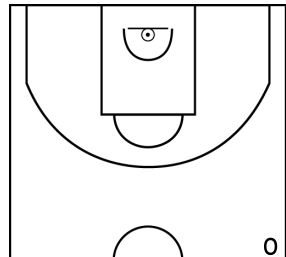
PÉRIODE 1



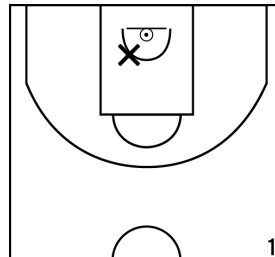
PÉRIODE 3



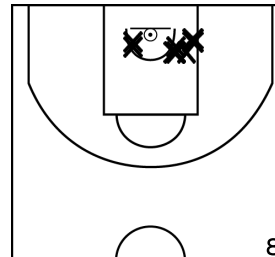
PROLONGATIONS



PÉRIODE 2



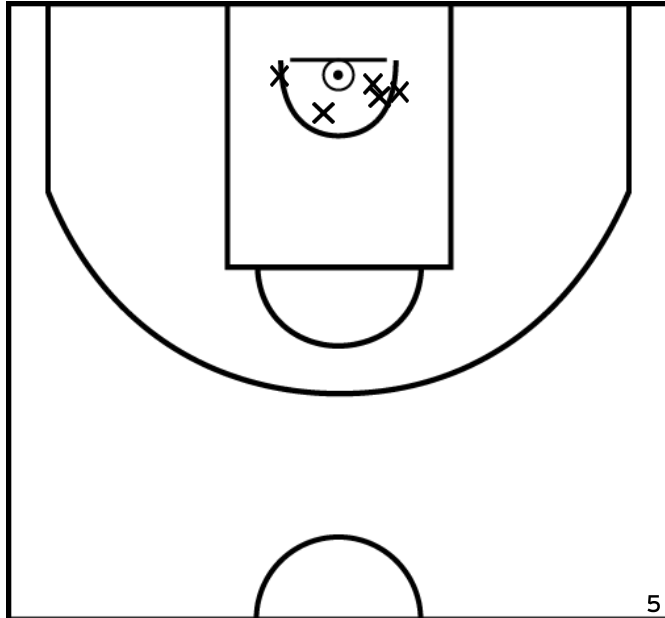
PÉRIODE 4



Rencontre: 89 Date: 26/11/22 Heure: 13:30

Arbitre: CONAN M VUILLAMY A

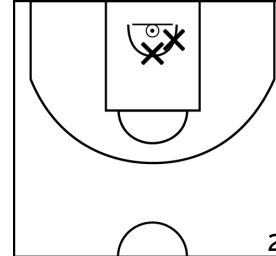
MAGER L. - ETOILE SAINT LAURENT BREST - 2 (A)



PÉRIODE 1



PÉRIODE 3



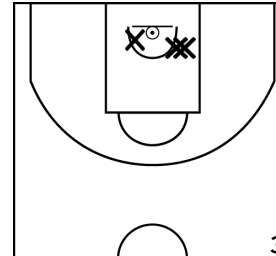
PROLONGATIONS



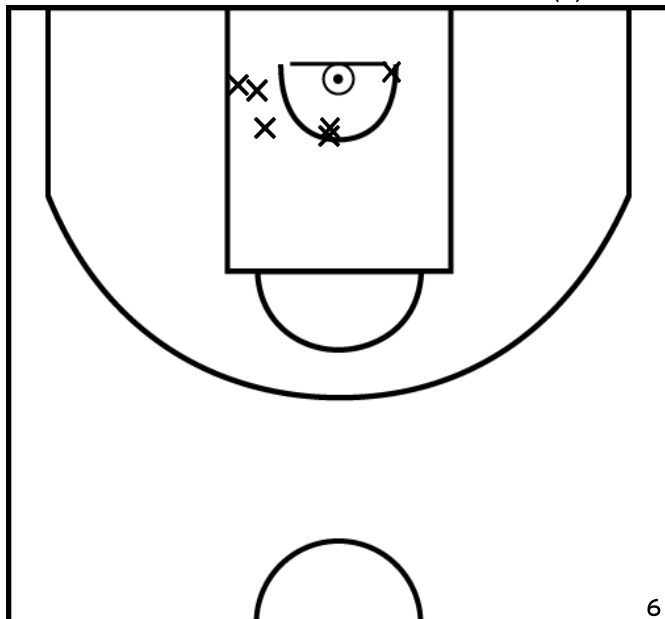
PÉRIODE 2



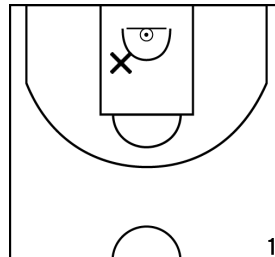
PÉRIODE 4



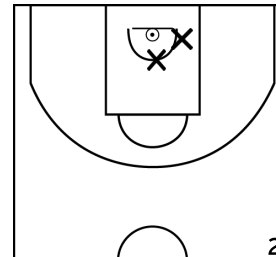
KERHOAS G. - ETOILE SAINT LAURENT BREST - 2 (A)



PÉRIODE 1



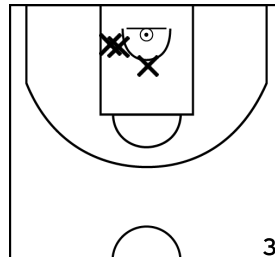
PÉRIODE 3



PROLONGATIONS



PÉRIODE 2



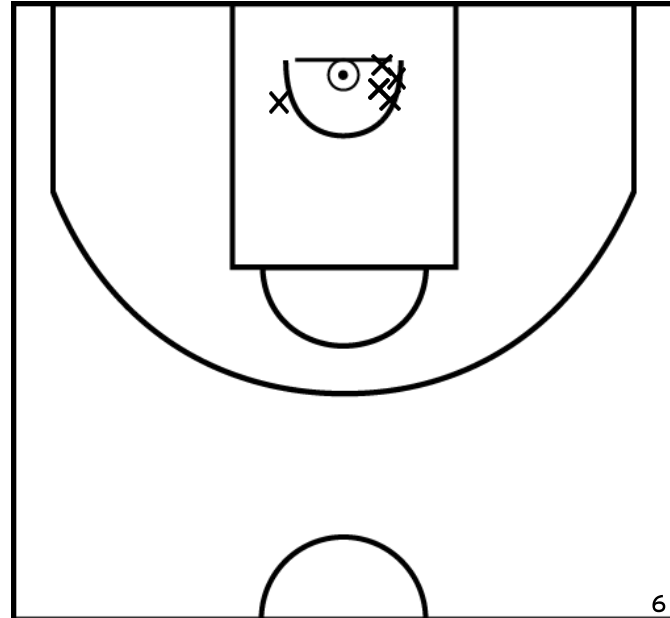
PÉRIODE 4



Rencontre: 89 Date: 26/11/22 Heure: 13:30

Arbitre: CONAN M VUILLAMY A

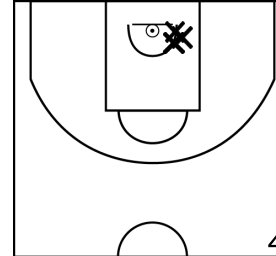
PHAN L. - ETOILE SAINT LAURENT BREST - 2 (A)



PÉRIODE 1



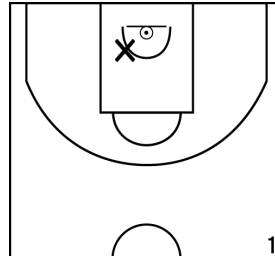
PÉRIODE 3



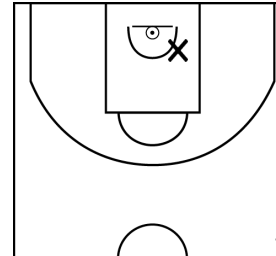
PROLONGATIONS



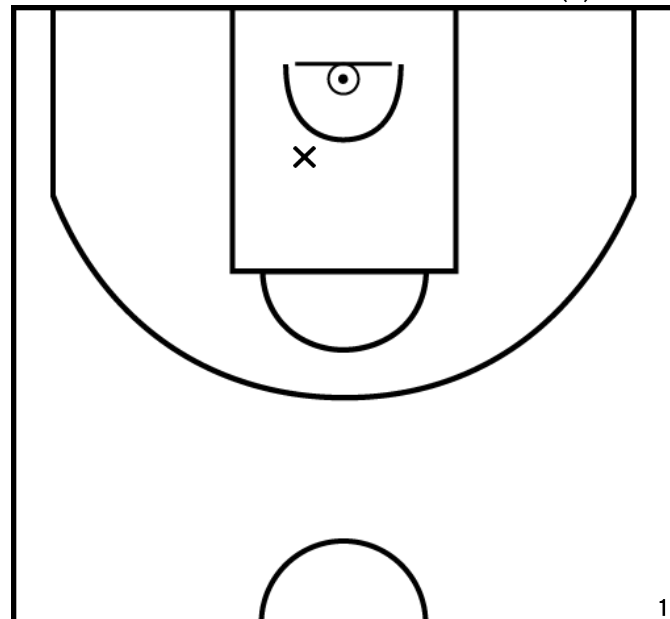
PÉRIODE 2



PÉRIODE 4



BARILLER A. - ETOILE SAINT LAURENT BREST - 2 (A)



PÉRIODE 1



PÉRIODE 3



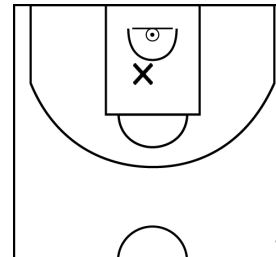
PROLONGATIONS



PÉRIODE 2



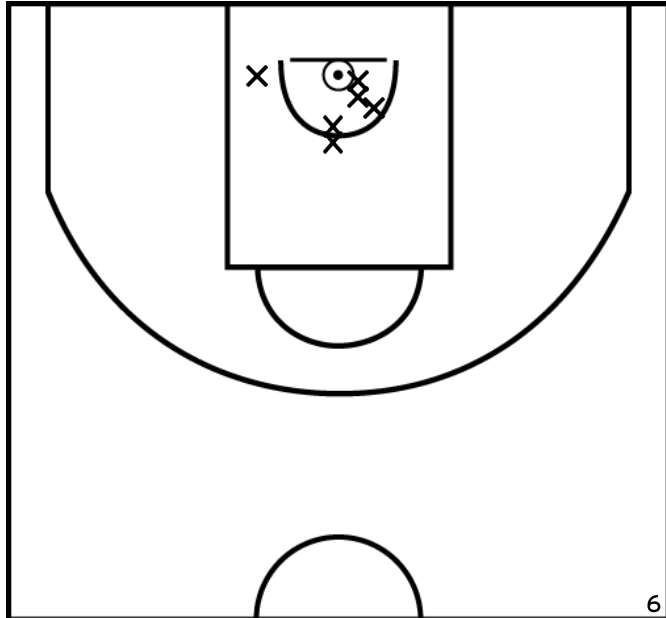
PÉRIODE 4



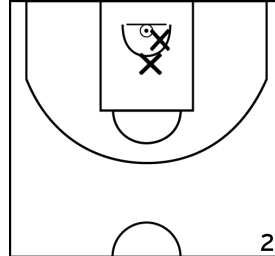
Rencontre: 89 Date: 26/11/22 Heure: 13:30

Arbitre: CONAN M VUILLAMY A

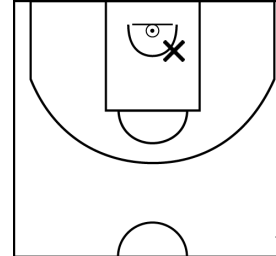
ÉQUIPE AMICALE SPORTIVE DU GUELMEUR - 2 (B)



PÉRIODE 1



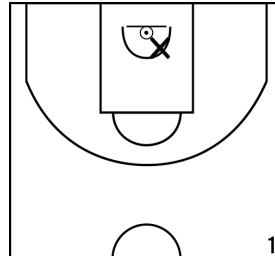
PÉRIODE 3



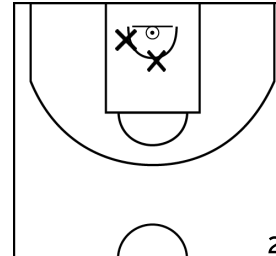
PROLONGATIONS



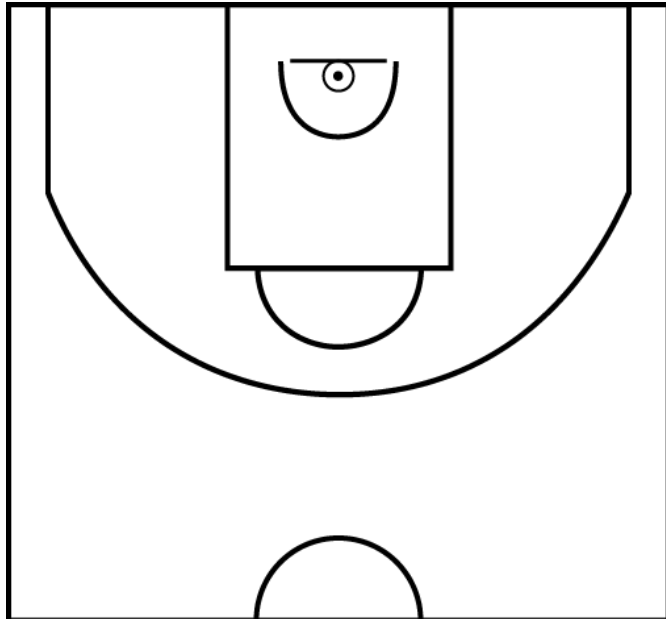
PÉRIODE 2



PÉRIODE 4



LOSUNG COAT E. - AMICALE SPORTIVE DU GUELMEUR - 2 (B)



PÉRIODE 1



PÉRIODE 3



PROLONGATIONS



PÉRIODE 2



PÉRIODE 4



Rencontre: 89 Date: 26/11/22 Heure: 13:30

Arbitre: CONAN M VUILLAMY A

---

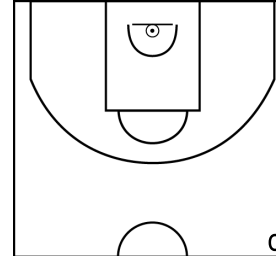
DAVY A. - AMICALE SPORTIVE DU GUELMEUR - 2 (B)



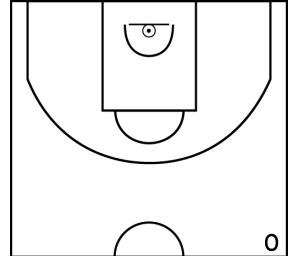
PÉRIODE 1



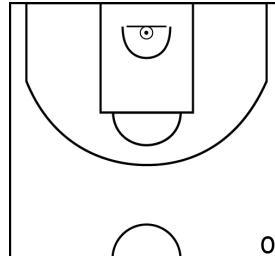
PÉRIODE 3



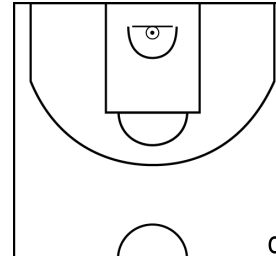
PROLONGATIONS



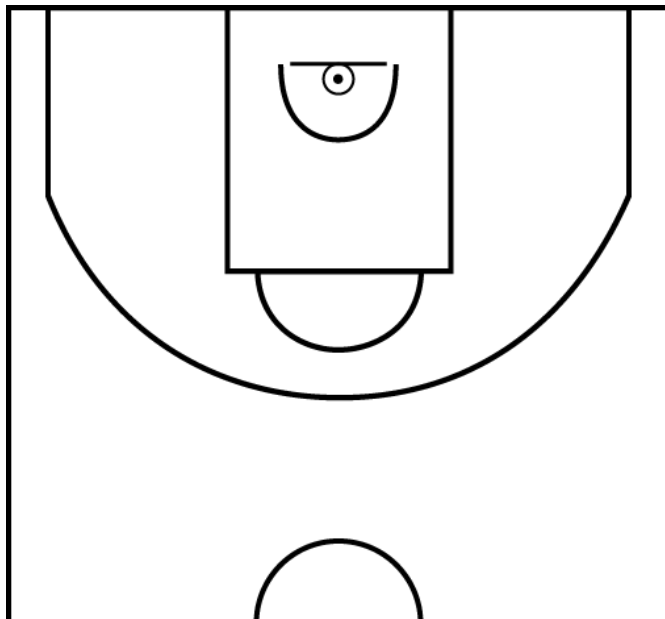
PÉRIODE 2



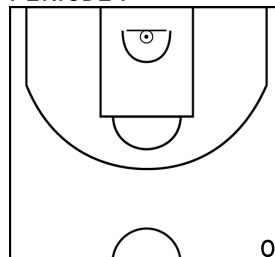
PÉRIODE 4



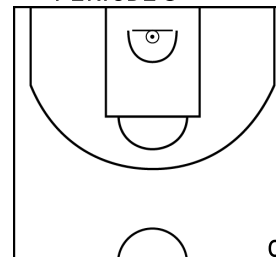
LORENZI CIAVALDINI M. - AMICALE SPORTIVE DU GUELMEUR - 2 (B)



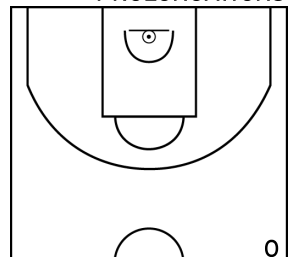
PÉRIODE 1



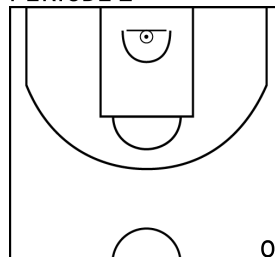
PÉRIODE 3



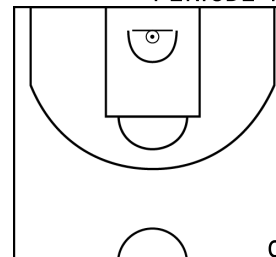
PROLONGATIONS



PÉRIODE 2



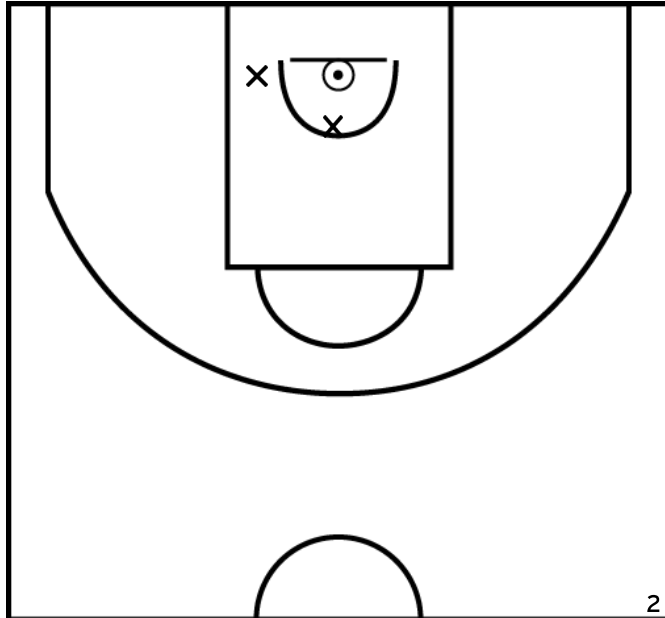
PÉRIODE 4



Rencontre: 89 Date: 26/11/22 Heure: 13:30

Arbitre: CONAN M VUILLAMY A

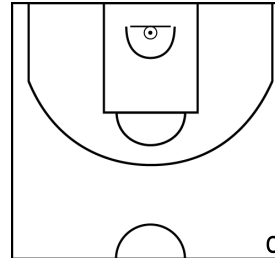
MARCHESE R. - AMICALE SPORTIVE DU GUELMEUR - 2 (B)



PÉRIODE 1



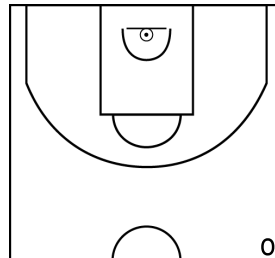
PÉRIODE 3



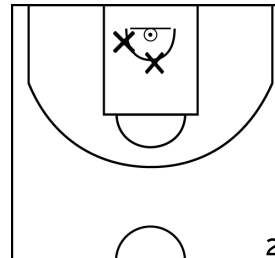
PROLONGATIONS



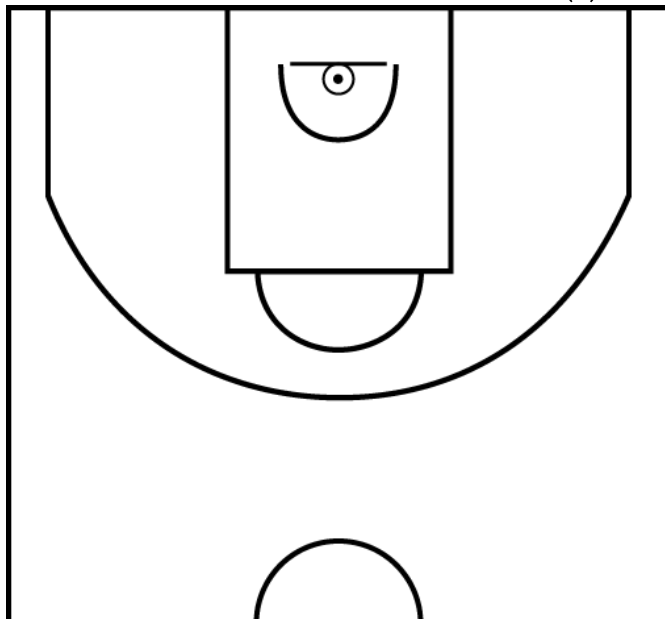
PÉRIODE 2



PÉRIODE 4



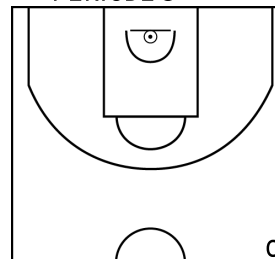
ANDRE L. - AMICALE SPORTIVE DU GUELMEUR - 2 (B)



PÉRIODE 1



PÉRIODE 3



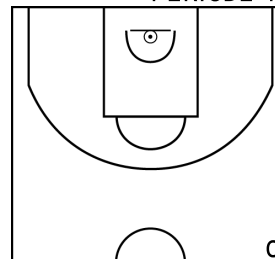
PROLONGATIONS



PÉRIODE 2



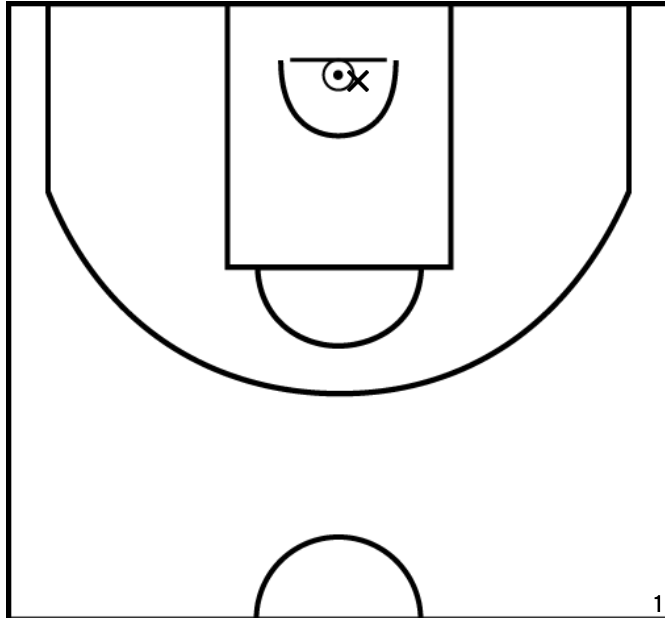
PÉRIODE 4



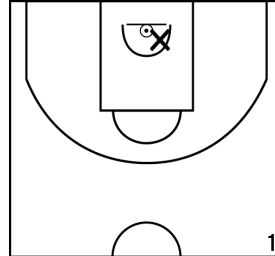
Rencontre: 89 Date: 26/11/22 Heure: 13:30

Arbitre: CONAN M VUILLAMY A

GORGUES E. - AMICALE SPORTIVE DU GUELMEUR - 2 (B)



PÉRIODE 1



PÉRIODE 3



PROLONGATIONS



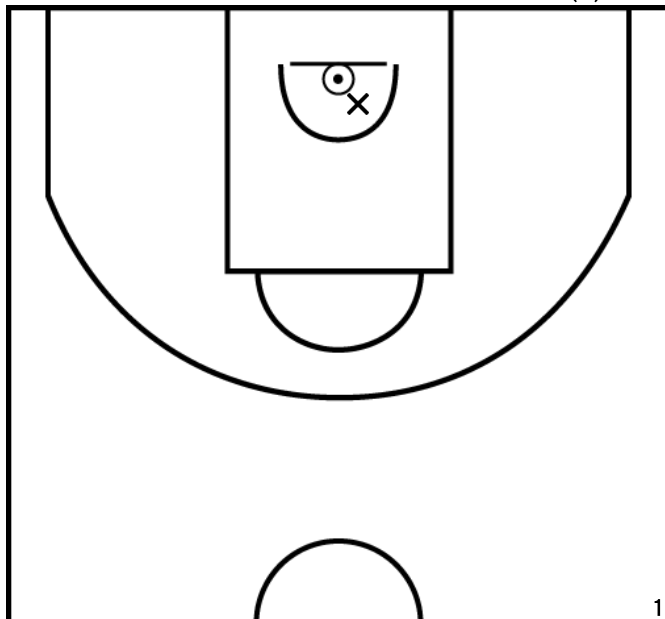
PÉRIODE 2



PÉRIODE 4



BARON M. - AMICALE SPORTIVE DU GUELMEUR - 2 (B)



PÉRIODE 1



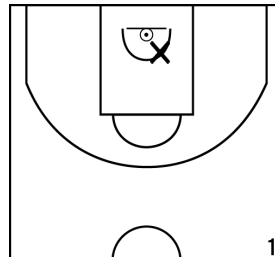
PÉRIODE 3



PROLONGATIONS



PÉRIODE 2



PÉRIODE 4

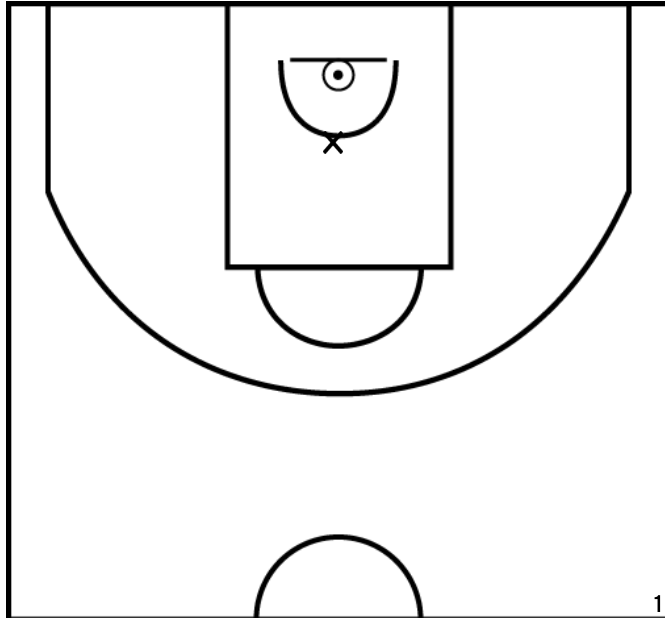




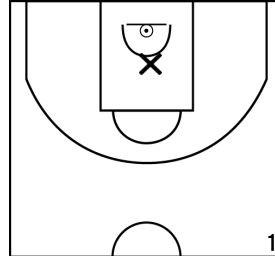
Rencontre: 89 Date: 26/11/22 Heure: 13:30

Arbitre: CONAN M VUILLAMY A

GABOREL PELLO S. - AMICALE SPORTIVE DU GUELMEUR - 2 (B)



PÉRIODE 1



PÉRIODE 3



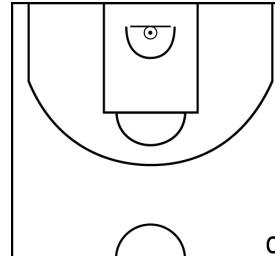
PROLONGATIONS



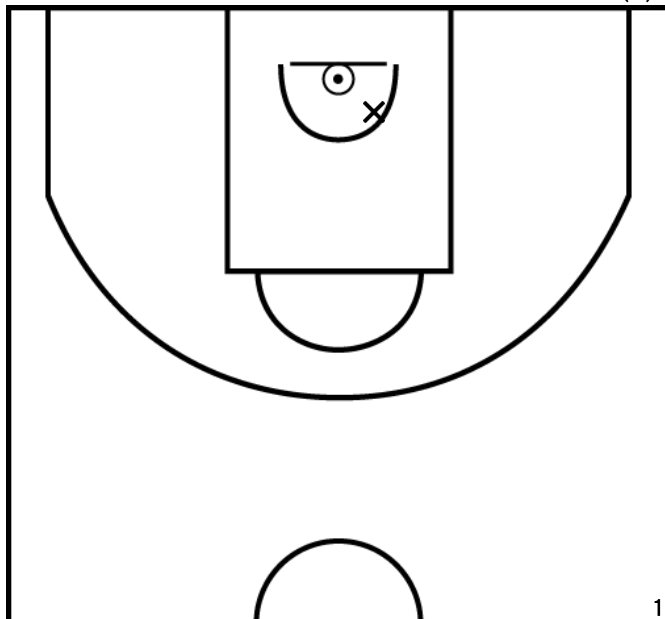
PÉRIODE 2



PÉRIODE 4



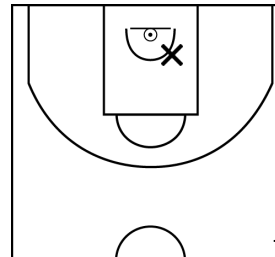
GUILLERME N. - AMICALE SPORTIVE DU GUELMEUR - 2 (B)



PÉRIODE 1



PÉRIODE 3



PROLONGATIONS



PÉRIODE 2



PÉRIODE 4

