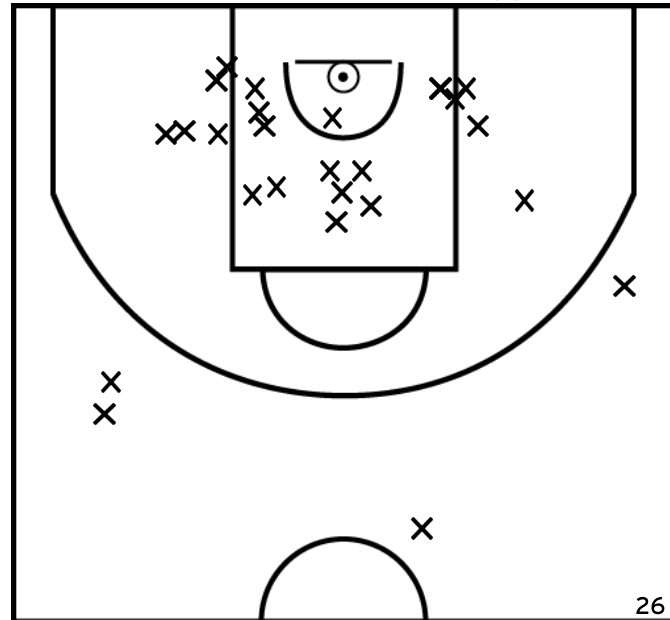


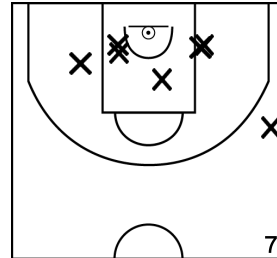
Rencontre: 240 Date: 20/11/22 Heure: 13:15

Arbitre: MEROUR A LAVERDURE J

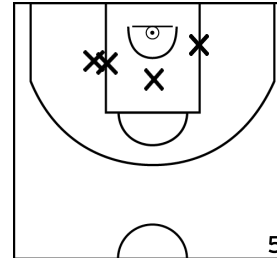
ÉQUIPE ETOILE SAINT LAURENT BREST - 3 (A)



PÉRIODE 1



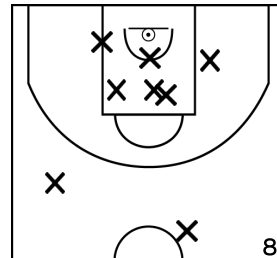
PÉRIODE 3



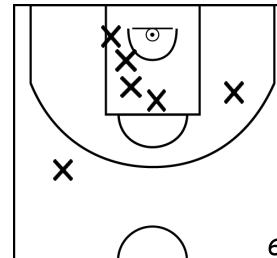
PROLONGATIONS



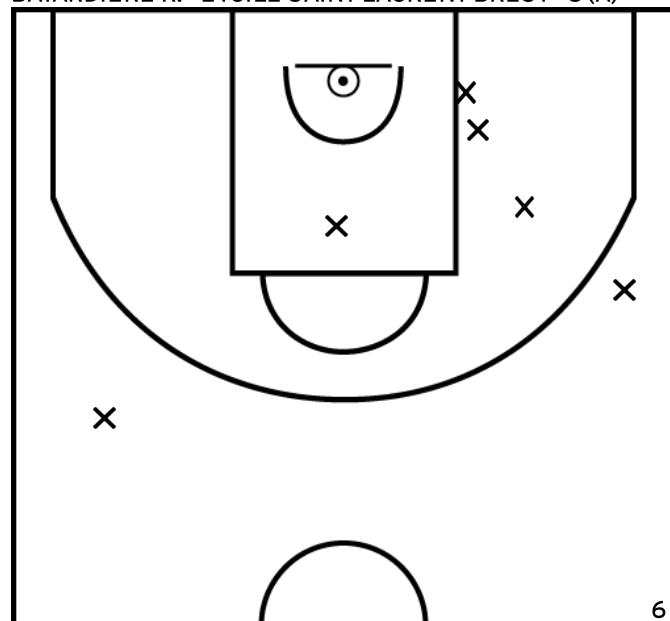
PÉRIODE 2



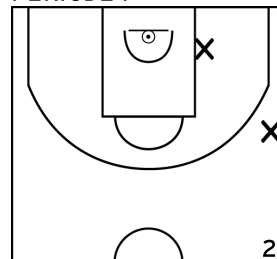
PÉRIODE 4



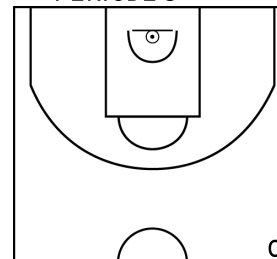
BATARDIERE R. - ETOILE SAINT LAURENT BREST - 3 (A)



PÉRIODE 1



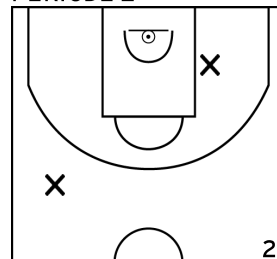
PÉRIODE 3



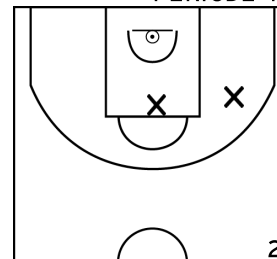
PROLONGATIONS



PÉRIODE 2



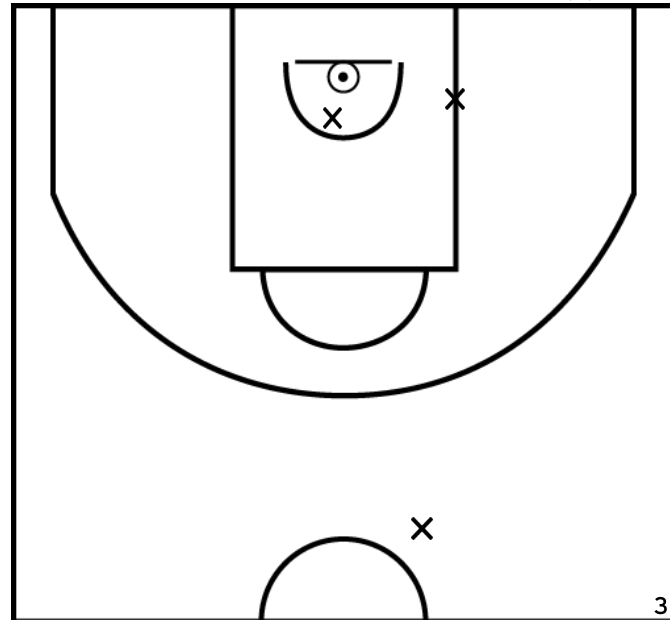
PÉRIODE 4



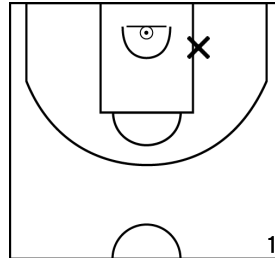
Rencontre: 240 Date: 20/11/22 Heure: 13:15

Arbitre: MEROUR A LAVERDURE J

JAVOUREZ C. - ETOILE SAINT LAURENT BREST - 3 (A)



PÉRIODE 1



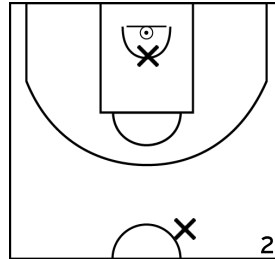
PÉRIODE 3



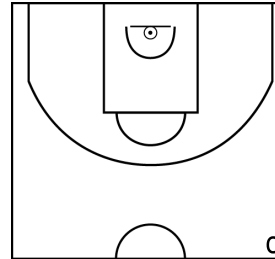
PROLONGATIONS



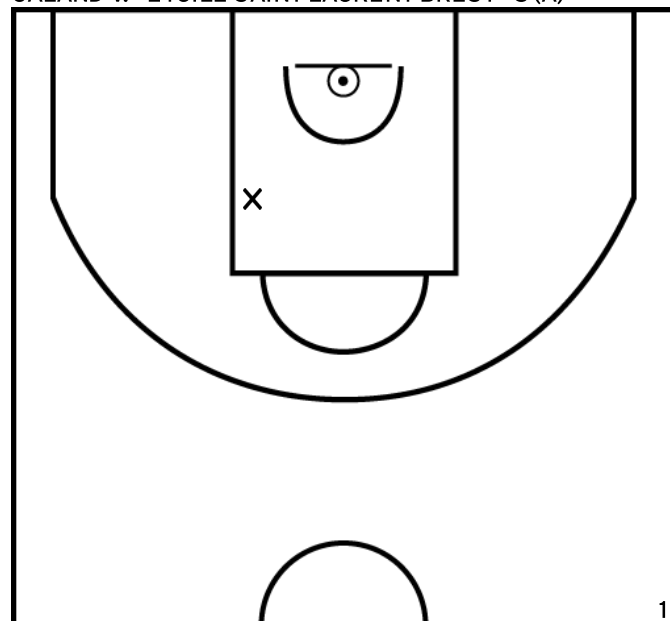
PÉRIODE 2



PÉRIODE 4



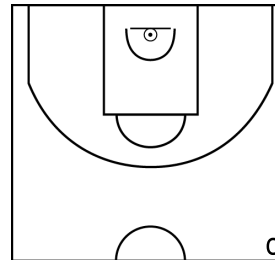
GALAND V. - ETOILE SAINT LAURENT BREST - 3 (A)



PÉRIODE 1



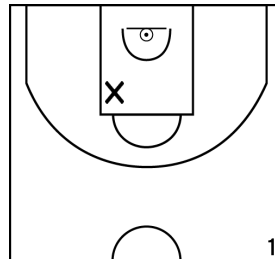
PÉRIODE 3



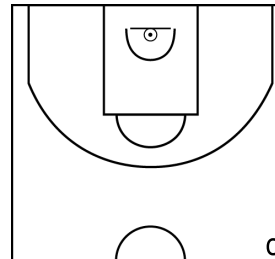
PROLONGATIONS



PÉRIODE 2



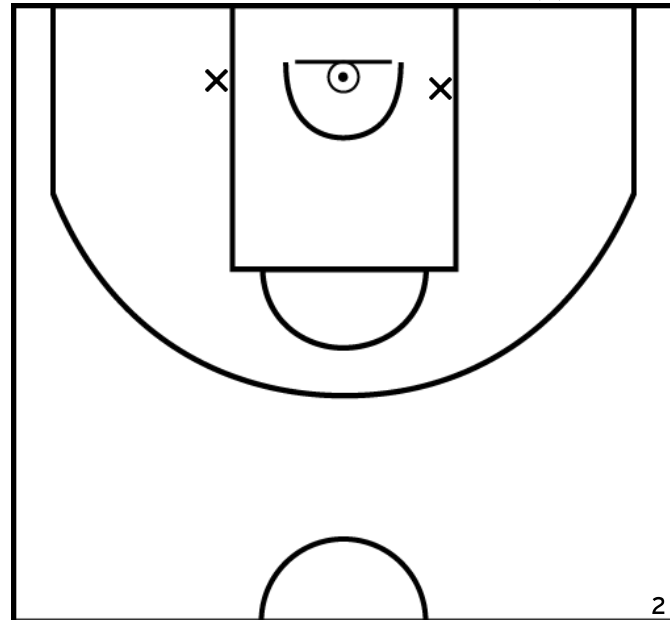
PÉRIODE 4



Rencontre: 240 Date: 20/11/22 Heure: 13:15

Arbitre: MEROUR A LAVERDURE J

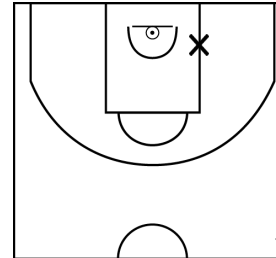
TANGUY S. - ETOILE SAINT LAURENT BREST - 3 (A)



PÉRIODE 1



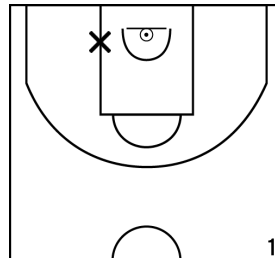
PÉRIODE 3



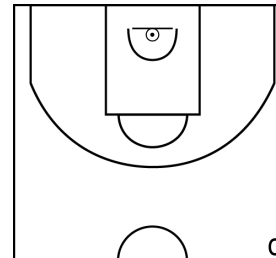
PROLONGATIONS



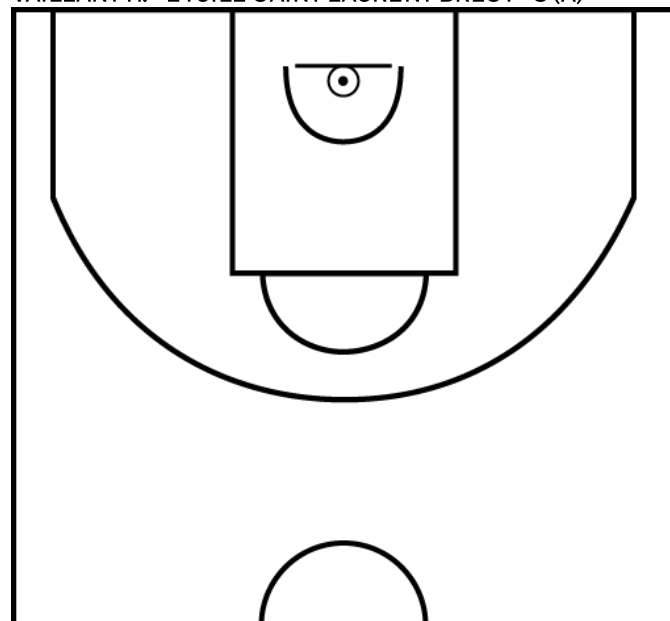
PÉRIODE 2



PÉRIODE 4



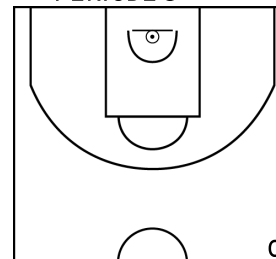
VAILLANT H. - ETOILE SAINT LAURENT BREST - 3 (A)



PÉRIODE 1



PÉRIODE 3



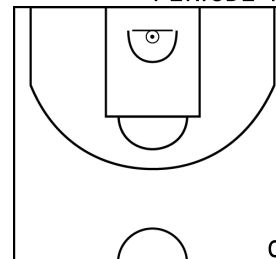
PROLONGATIONS



PÉRIODE 2



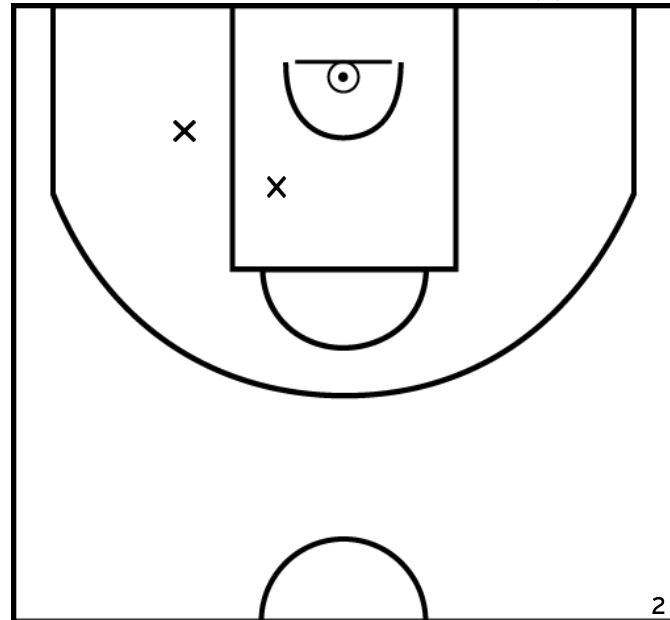
PÉRIODE 4



Rencontre: 240 Date: 20/11/22 Heure: 13:15

Arbitre: MEROUR A LAVERDURE J

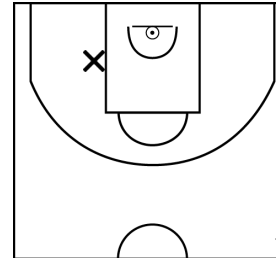
PETTON S. - ETOILE SAINT LAURENT BREST - 3 (A)



PÉRIODE 1



PÉRIODE 3



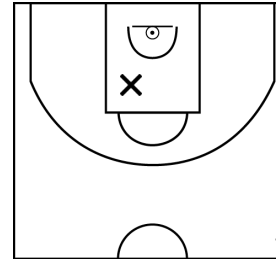
PROLONGATIONS



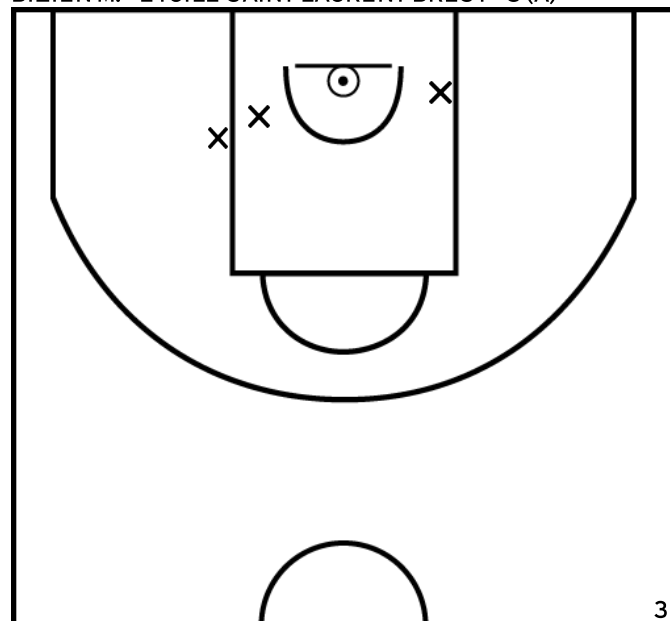
PÉRIODE 2



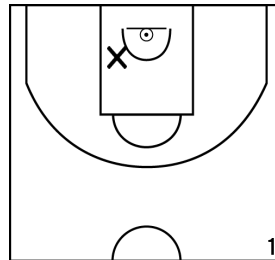
PÉRIODE 4



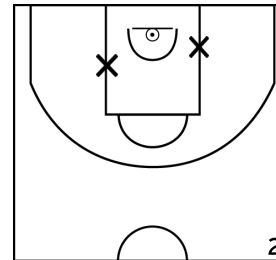
BIZIEN M. - ETOILE SAINT LAURENT BREST - 3 (A)



PÉRIODE 1



PÉRIODE 3



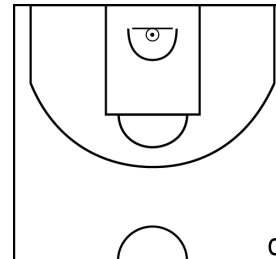
PROLONGATIONS



PÉRIODE 2



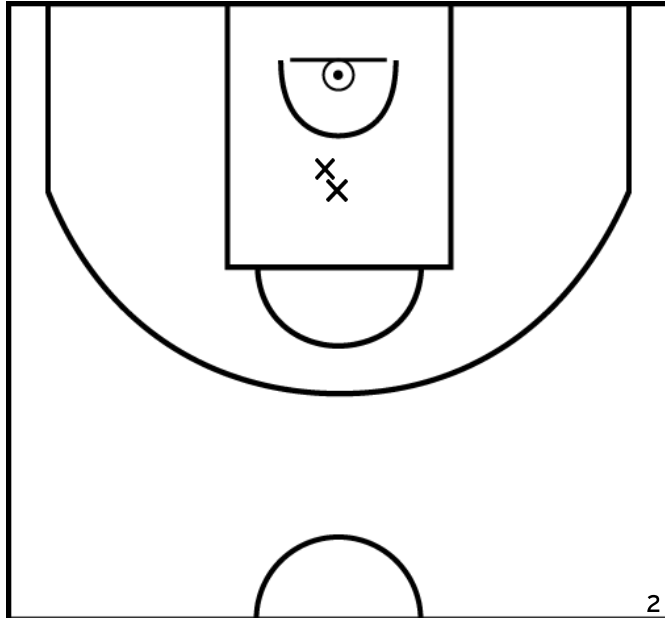
PÉRIODE 4



Rencontre: 240 Date: 20/11/22 Heure: 13:15

Arbitre: MEROUR A LAVERDURE J

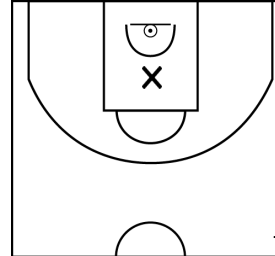
FEVRIER J. - ETOILE SAINT LAURENT BREST - 3 (A)



PÉRIODE 1



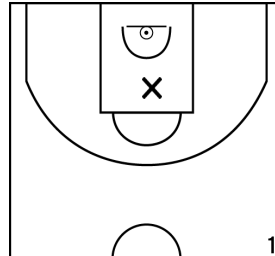
PÉRIODE 3



PROLONGATIONS



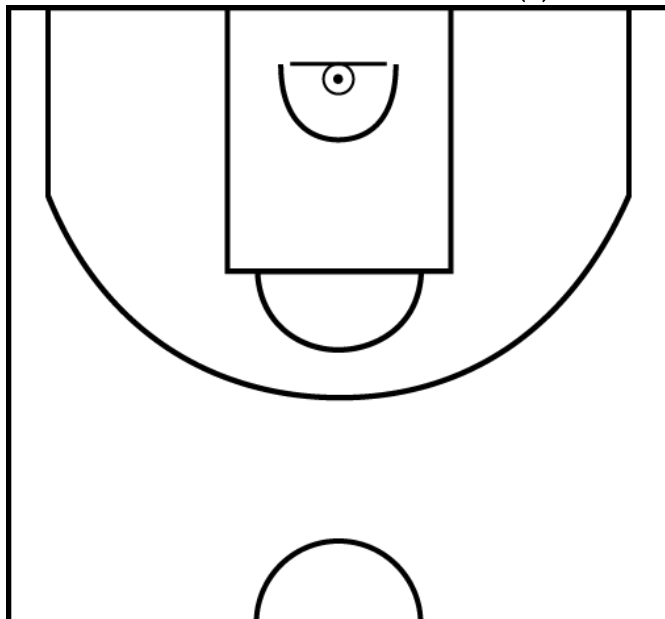
PÉRIODE 2



PÉRIODE 4



LE VEN L. - ETOILE SAINT LAURENT BREST - 3 (A)



PÉRIODE 1



PÉRIODE 3



PROLONGATIONS



PÉRIODE 2



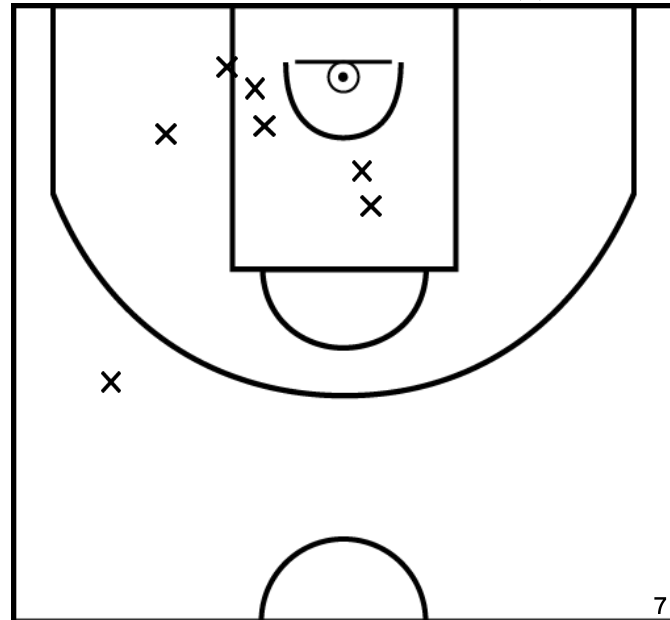
PÉRIODE 4



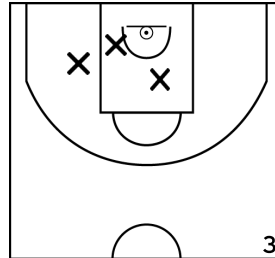
Rencontre: 240 Date: 20/11/22 Heure: 13:15

Arbitre: MEROUR A LAVERDURE J

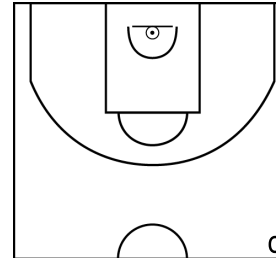
TIFRIT R. - ETOILE SAINT LAURENT BREST - 3 (A)



PÉRIODE 1



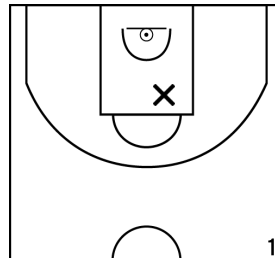
PÉRIODE 3



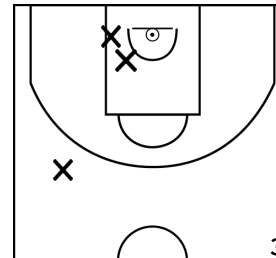
PROLONGATIONS



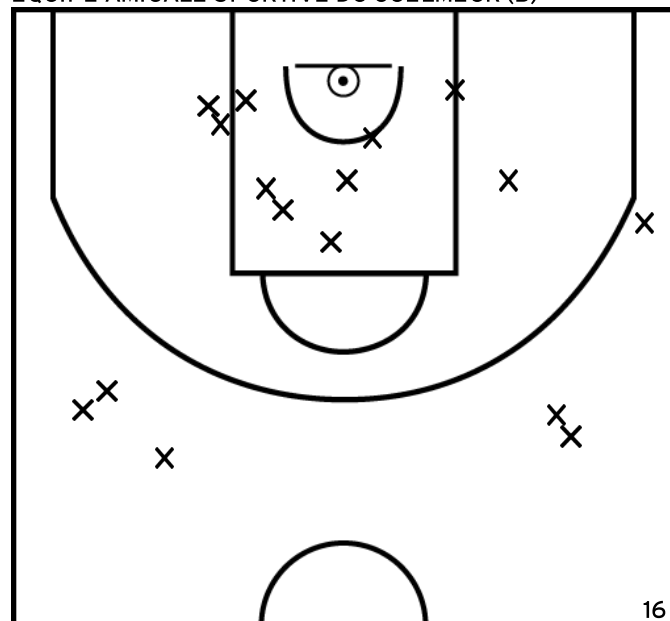
PÉRIODE 2



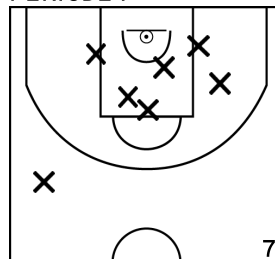
PÉRIODE 4



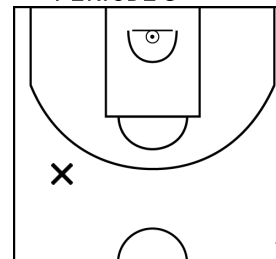
ÉQUIPE AMICALE SPORTIVE DU GUELMEUR (B)



PÉRIODE 1



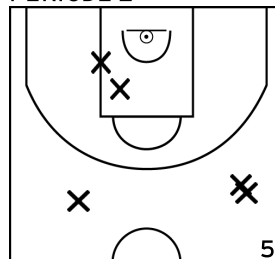
PÉRIODE 3



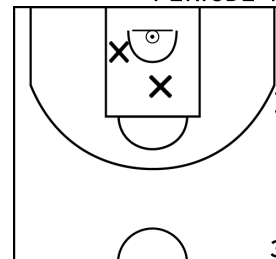
PROLONGATIONS



PÉRIODE 2



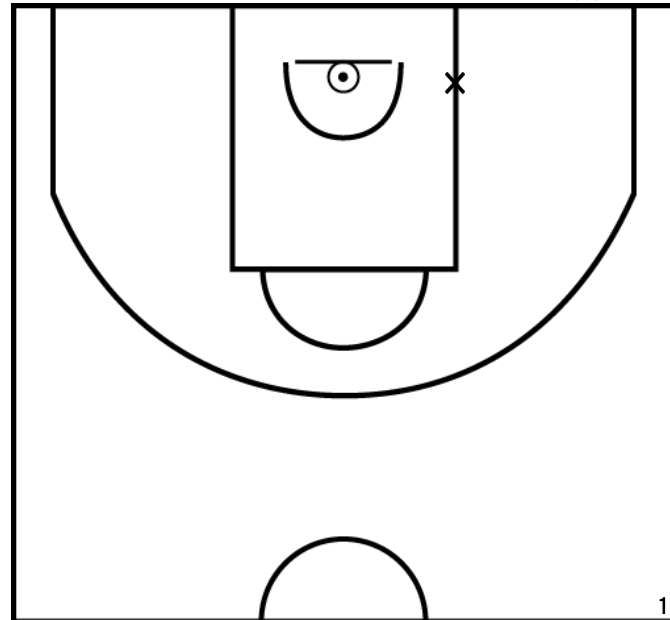
PÉRIODE 4



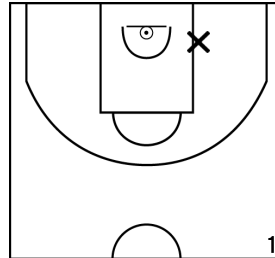
Rencontre: 240 Date: 20/11/22 Heure: 13:15

Arbitre: MEROUR A LAVERDURE J

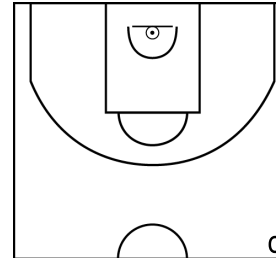
ERGATIAN L. - AMICALE SPORTIVE DU GUELMEUR (B)



PÉRIODE 1



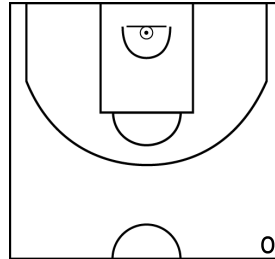
PÉRIODE 3



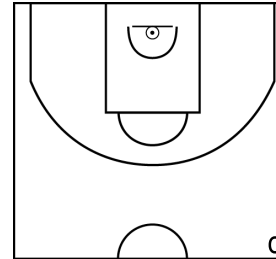
PROLONGATIONS



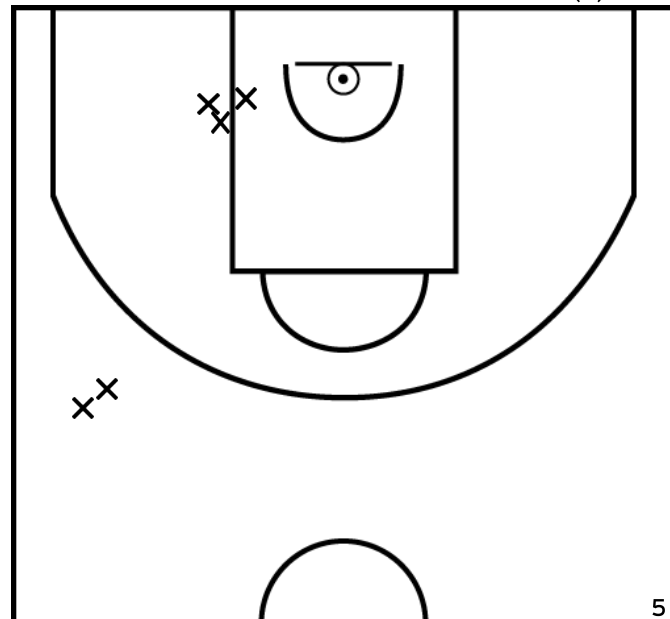
PÉRIODE 2



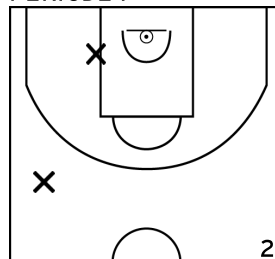
PÉRIODE 4



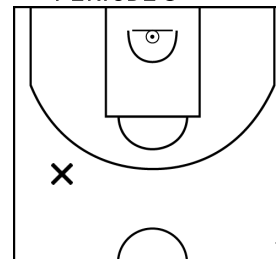
GUIVARCH L. - AMICALE SPORTIVE DU GUELMEUR (B)



PÉRIODE 1



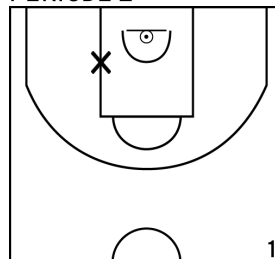
PÉRIODE 3



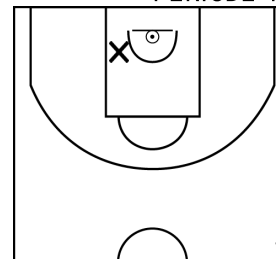
PROLONGATIONS



PÉRIODE 2



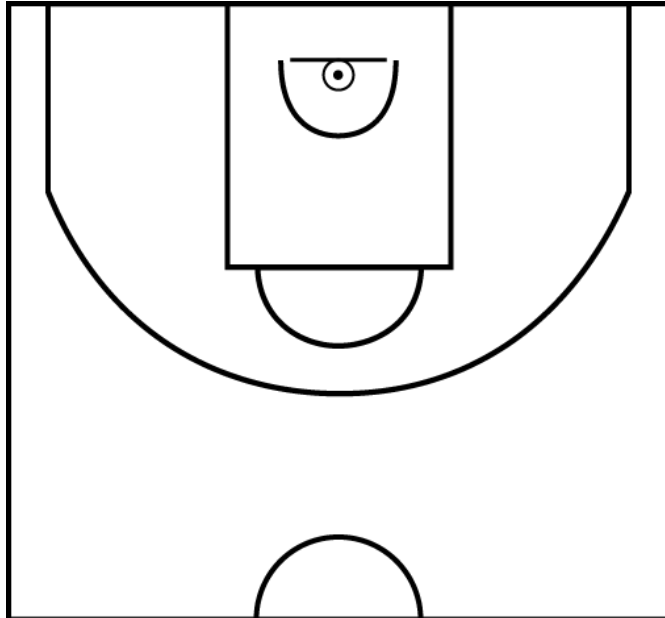
PÉRIODE 4



Rencontre: 240 Date: 20/11/22 Heure: 13:15

Arbitre: MEROUR A LAVERDURE J

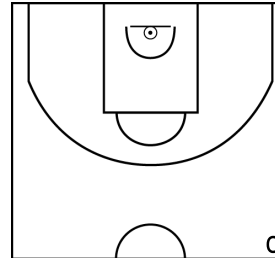
VAILLANT F. - AMICALE SPORTIVE DU GUELMEUR (B)



PÉRIODE 1



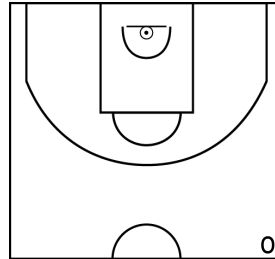
PÉRIODE 3



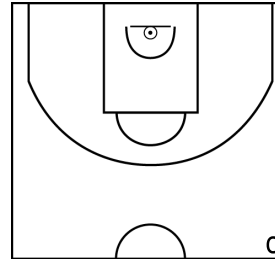
PROLONGATIONS



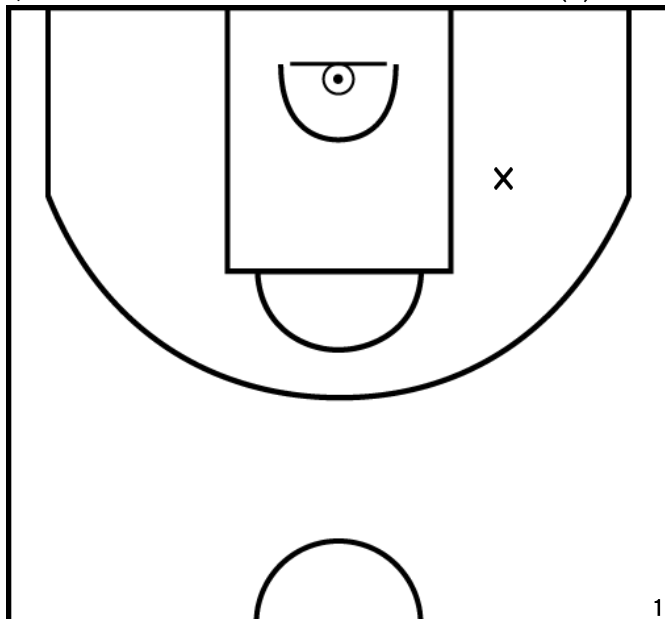
PÉRIODE 2



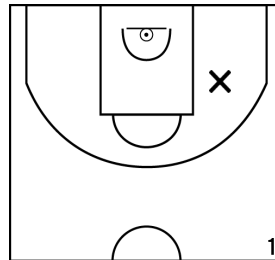
PÉRIODE 4



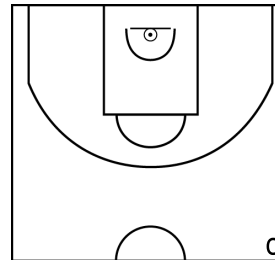
QUELLEC E. - AMICALE SPORTIVE DU GUELMEUR (B)



PÉRIODE 1



PÉRIODE 3



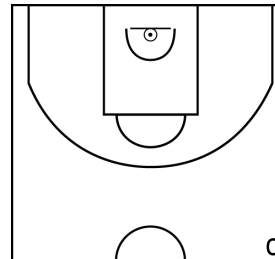
PROLONGATIONS



PÉRIODE 2



PÉRIODE 4

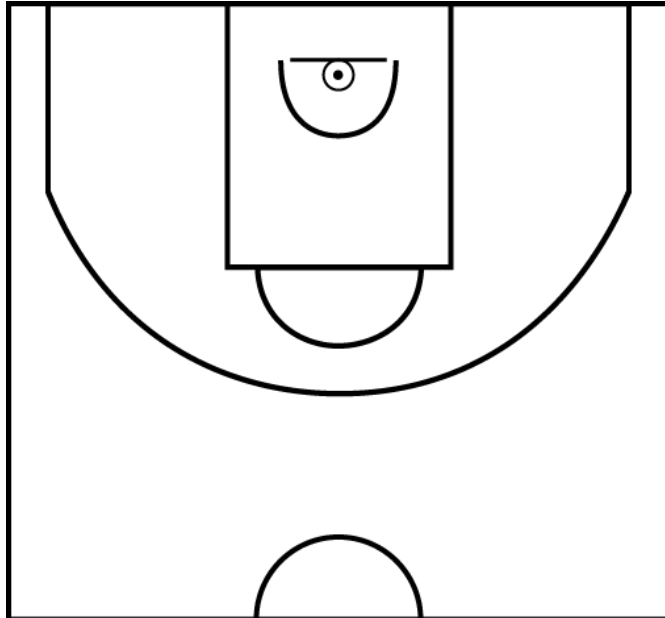




Rencontre: 240 Date: 20/11/22 Heure: 13:15

Arbitre: MEROUR A LAVERDURE J

GRANIER L. - AMICALE SPORTIVE DU GUELMEUR (B)



PÉRIODE 1



PÉRIODE 3



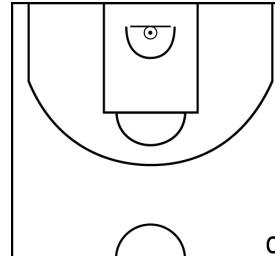
PROLONGATIONS



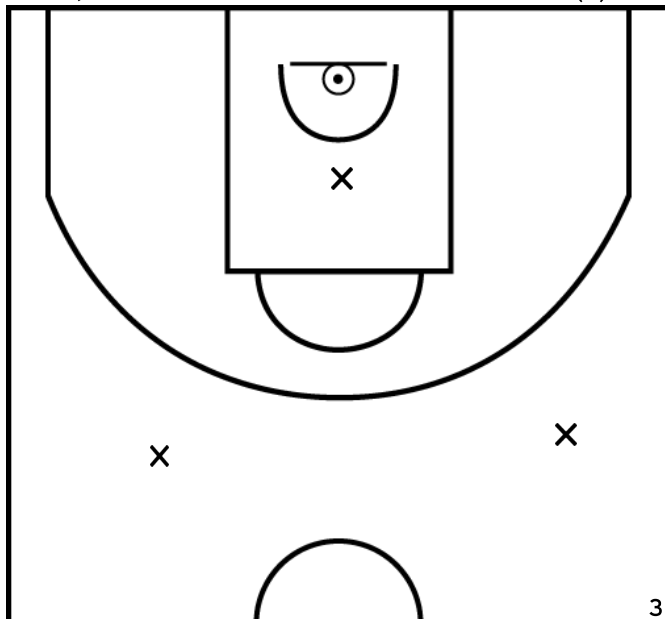
PÉRIODE 2



PÉRIODE 4



JEZEQUEL C. - AMICALE SPORTIVE DU GUELMEUR (B)



PÉRIODE 1



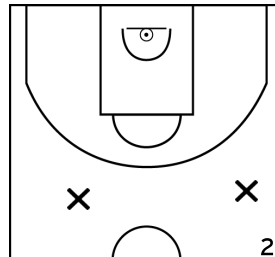
PÉRIODE 3



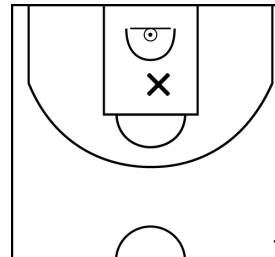
PROLONGATIONS



PÉRIODE 2



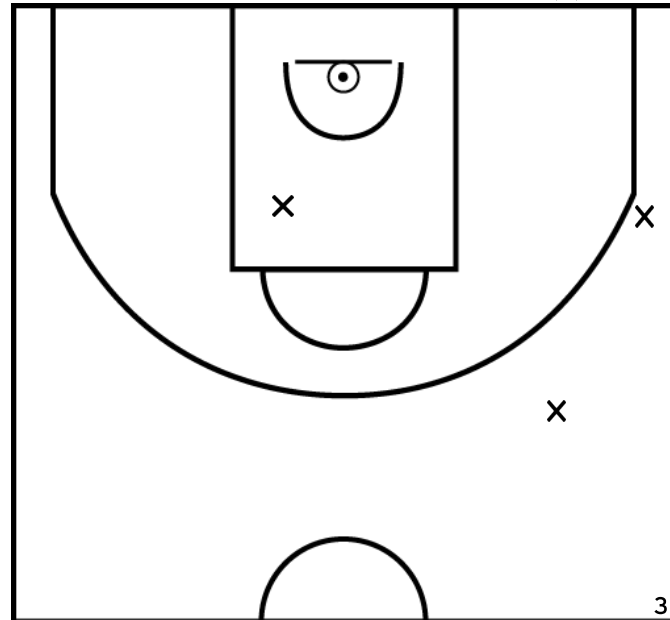
PÉRIODE 4



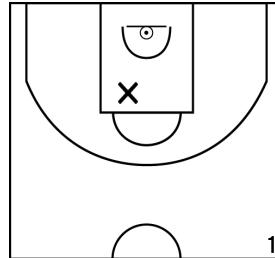
Rencontre: 240 Date: 20/11/22 Heure: 13:15

Arbitre: MEROUR A LAVERDURE J

DURAND J. - AMICALE SPORTIVE DU GUELMEUR (B)



PÉRIODE 1



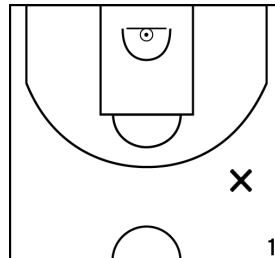
PÉRIODE 3



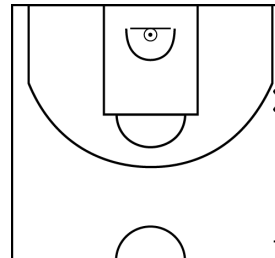
PROLONGATIONS



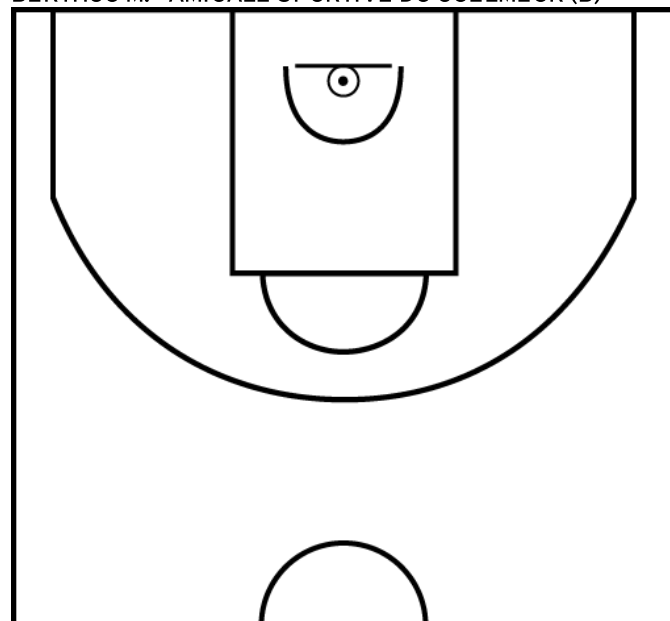
PÉRIODE 2



PÉRIODE 4



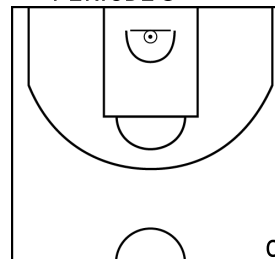
BERTHOU M. - AMICALE SPORTIVE DU GUELMEUR (B)



PÉRIODE 1



PÉRIODE 3



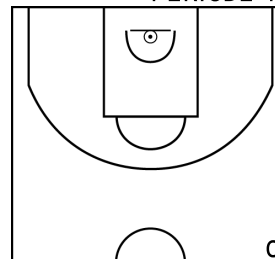
PROLONGATIONS



PÉRIODE 2



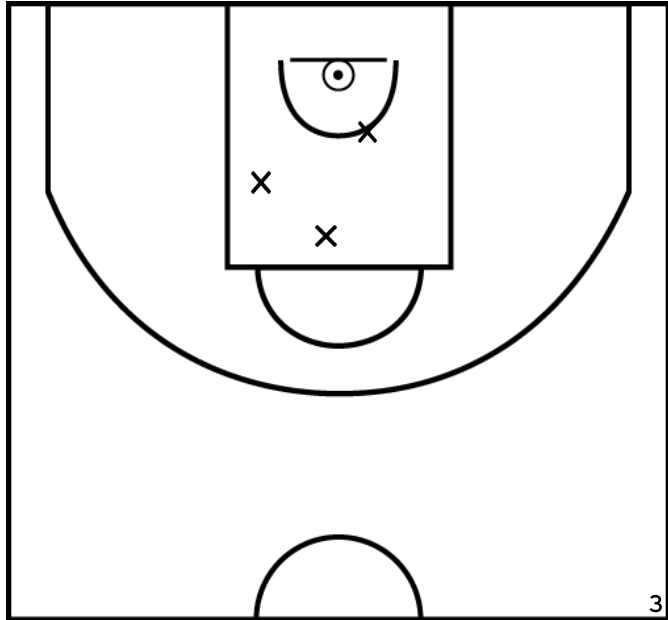
PÉRIODE 4



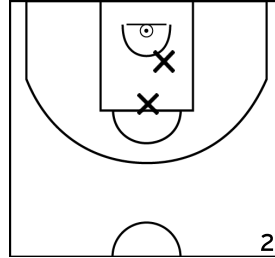
Rencontre: 240 Date: 20/11/22 Heure: 13:15

Arbitre: MEROUR A LAVERDURE J

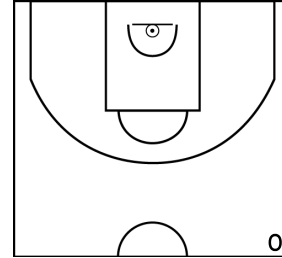
NEDELEC M. - AMICALE SPORTIVE DU GUELMEUR (B)



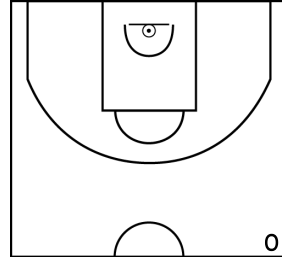
PÉRIODE 1



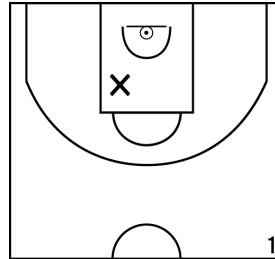
PÉRIODE 3



PROLONGATIONS



PÉRIODE 2



PÉRIODE 4

